

**[E[M]CONOMY
means:]**

emco group

Designed for your profit



5-axis performance for small workpieces. MAXXMILL 350

Compact milling centre for 5-axis machining

MAXXMILL 350

MAXXMILL 350 is the ideal vertical milling centre for complex 5-axis machining of small workpieces in small or medium quantities. It is the ideal machine for tool and mould making, mechanical, precision and medical engineering, optical industry, contract manufacturing and further education facilities. MAXXMILL 350 can accurately and economically process workpieces on 5 sides in a single set-up.

[Machine bed]

- Machine bed and slide systems made of solid welded steel and cast iron components

[Spindle]

- Mechanical spindle direct drive: 12000 rpm
- Water-cooled motor spindle: 24000 rpm

[Tool magazine]

- Tool changer with 20 (30, 50) ISO30, 30 (50) HSK-A40 tool stations

[Control panel]

- Available with Siemens 840D sl or Heidenhain TNC 620 HSCI

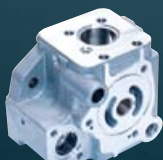


[Table]

- Massive swivel-rotary table with \varnothing 400 mm

[Chip removal]

- The chips can be removed by an optional available hinge type chip conveyer.



Housing
(cast steel)



Distributor
(brass)



Pump housing
(aluminium)

[Engineering]

Highlights

- 5-axis machining in a single set-up
- Top thermostability
- Top machining precision
- Modern moving column concept
- Massive swivel-rotary table with \varnothing 400 mm provides high stability and precision
- Compact machine design
- Cutting-edge control technology from Siemens or Heidenhain
- Extensive options such as water-cooled motor spindle with 24000 rpm, chain magazine with 50 positions ISO30 / HSK-A40, etc.
- Optimal chip removal
- Attractive price-performance ratio
- Made in the Heart of Europe



The swivel-rotary table has a flexible clamping surface with a diameter of 400 mm and can be loaded with 50 kg. A workpiece with a maximum edge length of 250 x 250 x 225 mm can be processed on 5 sides with optimum results.



With +/- 100° swivel range the B-axis provides a larger work area compared with the products from other manufacturers. The C-axis can be rotated by 360° without limitation.

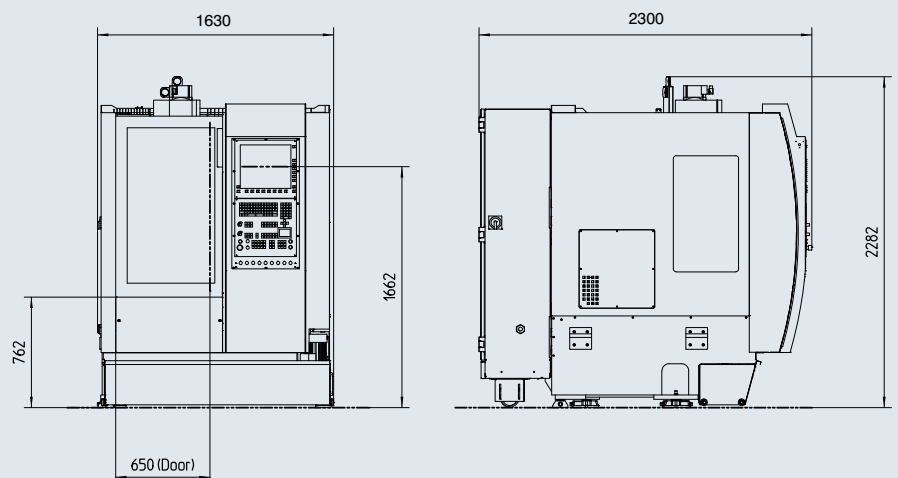


The tool magazine is equipped with 20 (optionally 30) ISO 30 tool stations. A chain magazine with 50 ISO30/HSK-A40 stations is also available as an option.



MAXXMILL 350 is equipped with cutting-edge control technology. Heidenhain TNC620 and Siemens 840D sl are the newest products on the market and provide an optimal use of CNC control to the operator and to the programmer.

Assembly plan



[Technical data]



Designed for your profit

MAXXMILL 350

Travel and tolerances	
Travel in X (without 100 mm extra distance for tool change)	350 mm (13.8")
Travel in Y	250 mm (9.8")
Travel in Z	300 mm (11.8")
Distance spindle nose - table (min. - max.)	70 / 370 mm (2.8 / 14.6")
Swivel range B-axis	+/-100°
Range of rotation C-axis (rotary table)	0 – 360°
Feed	
Rapid motion speed X-Y-Z-axis	30 m/min (1181.1 ipm)
Max. rotational speed B-axis	20 rpm
Max. rotational speed C-axis	25 rpm
Max. feed force X-axis	3000 N (674.4 lbs)
Max. feed force Y-axis	3000 N (674.4 lbs)
Max. feed force Z-axis	3000 N (674.4 lbs)
Max. acceleration X-Y-Z-axis	4 / 3 / 3 m/s ²
Swivel-rotary table	
Table diameter	400 mm (15.7")
Table-floor distance	860 mm (33.8")
Number of T-grooves	5
Groove spacing	75 mm (2.9")
Groove wide	14 mm (0.55")
Max. permissible workpiece weight (evenly distributed)	50 kg (110.2 lb)
Main spindle (mechanical spindle)	
Spindle speed	50 – 12000 rpm
Maximum torque	33 Nm (S6) (30.2 ft/lbs)
Maximum power	7 kW (S6) (9.4 hp)
Tool taper ISO 30	DIN 69871
Pull studs	DIN 69872A
Drive	direct with coupling
Main spindle (motor spindle)	
Spindle speed	50 – 24000 rpm
Maximum torque	38 Nm (27.9 ft/lbs)
Maximum power	16 kW (21.5 hp)
Tool taper	HSK-A40

Tool magazine	
Number of tool stations	20 (30, 50) ISO 30 30 (50) HSK-A40
Tool changing type	Changer arm
Tool management	random
Tool changing time (tool - tool)	2 sec.
Max. tool diameter	63 mm (2.5")
Max. tool diameter (without neighbouring tool)	100 mm (3.9")
Max. tool length	200 mm (7.9")
Max. tool weight	5 kg (11.0 lb)
Total tool weight supported by the magazine	60 / 70 / 100 kg (132.3 / 154,3 / 220,5 lb)
Coolant	
Tank capacity	120 l (31.7 gal)
Standard pump pressure	2 bar (29.0 PSI)
Max. operating rate at 2 bar	40 l/min (10.6 gal/min)
Pneumatics	
Min. pressure supply	6 bar (87.1 PSI)
Min. volume capacity	200 NI/min
Lubrication system	
Spindle	Grease
Caged roller ways	Oil / central lubrication
Ball screws	Oil / central lubrication
Dimensions	
Total height	2300 mm (90.6")
Floor space L x D (64.2 x 90.6")	1630 x 2300 mm
Weight	3800 kg (8.377 lb)



EN8632 - 08/15 - Technical modifications reserved. Errors and omissions excepted.

www.emco-world.com