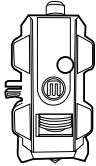


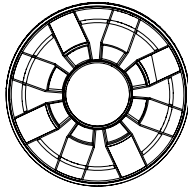
# MakerBot Replicator Mini+

## QUICK START GUIDE

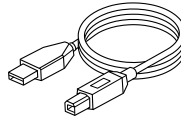
### 1 CHECK BOX CONTENTS



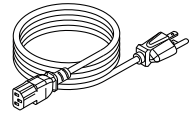
MakerBot® Replicator®  
Smart Extruder+



Small MakerBot  
PLA Filament spool



USB A-to-B cable



Power cord

### 2 SET UP USING OUR APP

## Go to [MakerBot.com/GetStarted](https://www.makerbot.com/GetStarted)

- Download our app to your computer or mobile phone.
- Download the Replicator Mini+ User Manual and review safety information.
- If you're unable to go online, turn to the reverse side for offline setup.



Make sure to read all safety information before operating your 3D printer.

## SUPPORT

Visit our Support page for troubleshooting guides and advanced information.

[support.makerbot.com](https://support.makerbot.com)

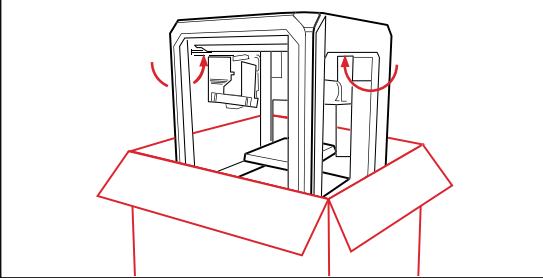
→ SEE REVERSE SIDE FOR OFFLINE SETUP

# MakerBot Replicator Mini+

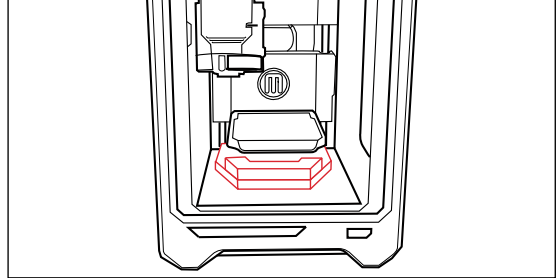
## OFFLINE SETUP

→ PLEASE BEGIN ON THE REVERSE SIDE

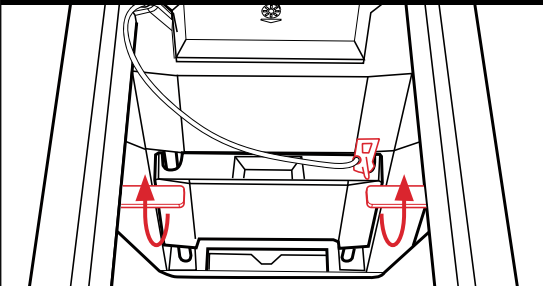
**1 LIFT OUT ACCESSORY BOX AND REPLICATOR MINI+**



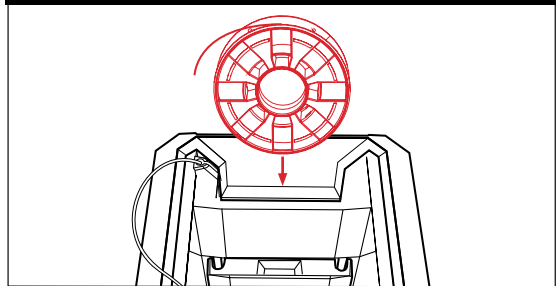
**2 REMOVE FOAM**



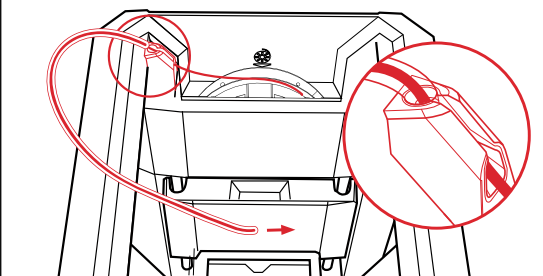
**3 REMOVE CLIPS FROM BELT AND ROD**



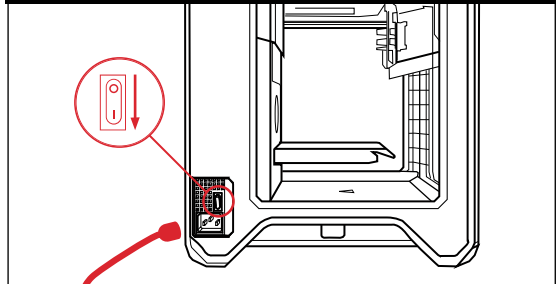
**4 INSTALL FILAMENT SPOOL**



**5 ROUTE FILAMENT THROUGH GUIDE TUBE**



**6 PLUG IN POWER CORD AND POWER ON**



→ CONNECT TO A COMPUTER USING THE USB CABLE AND OPEN THE MAKERBOT APP