

# iCUTwater/ SMART

**imes-icore**<sup>®</sup>  
Competence in CNC & DENTAL-Solutions



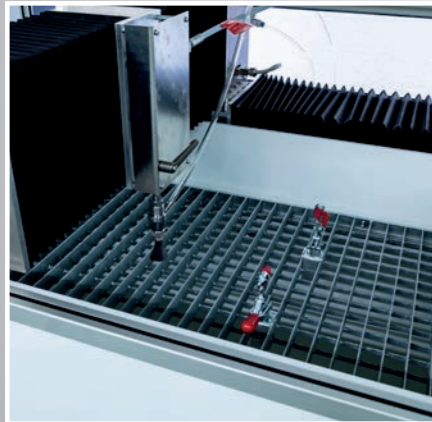
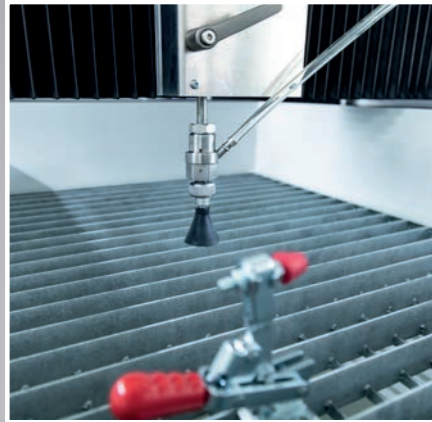
The ideal workshop solution

EN

[www.imes-icore.com](http://www.imes-icore.com)

# iCUTwater SMART

THE IDEAL WORKSHOP SOLUTION



## HIGHLIGHTS

- Machine & pump “Made in Germany”
- Including cutting pump
- Operator protection (complete enclosure)
- 3-plunger high-pressure pump with an efficiency of 90%
- Operator training in Eiterfeld (Hesse Germany) included
- Abrasive cutting possible without pressure tank
- Extremely compact design
- Machine fits 900 mm wide doors
- Integrated sedimentation tank for waste water pre-treatment
- Power supply via standard CEE 16 A connection
- Low weight (only 800 kg incl. Water)
- Two installation variants possible
- Low noise emission (only < 78 dB in cutting mode)
- Easy to use control software



The iCUTwater SMART is the first choice for small series, educational institutions and workshops. Our goal was to realize a compact and inexpensive water jet system, which requires as little effort as possible, to set up, maintain and operate. The machine can be connected to a regular 16 A power connection, and works cleanly and quiet through their housing. The pump, developed and manufactured in Germany, can be installed variably next to or behind the machine. This provides additional flexibility. The machine can be installed through a standard 900 mm wide door.

Need more space?

Ask for larger machines with up to 6 meters working range and 6000 bar pressure

# iCUTwater SMART

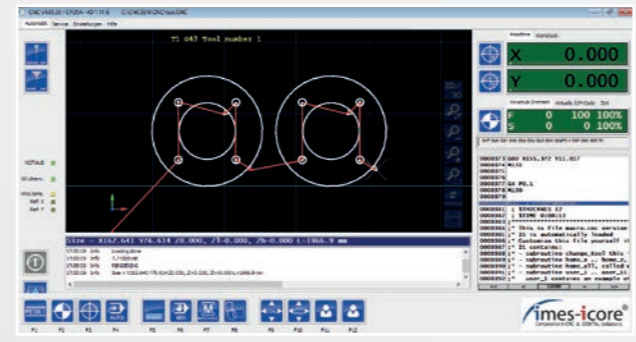
VARIETY IN A MINIMUM OF SPACE

Stainless steel	Up to 10 mm
Titanium	Up to 10 mm
Composite materials	Up to 10 mm
Brass	Up to 12 mm
Copper	Up to 15 mm
Plastics	Up to 15 mm
Natural Wood	Up to 15 mm
Acrylic Glass	Up to 15 mm
Aluminium	Up to 20 mm
Glass/bulletproof glass	Up to 20 mm
Marble/Ceramic tiles	Up to 20 mm
Marble	Up to 25 mm
Rubber	Up to 25 mm
Various foams	Up to 40 mm



## CONTROLLING SOFTWARE

- Operation via supplied laptop with Windows 10
- User-friendly cutting software
- DXF and BMP conversion possible
- Large and dynamic material database
- Control software included (no running license costs)



monogram, duration 04:58 min (Brass, 6 mm)

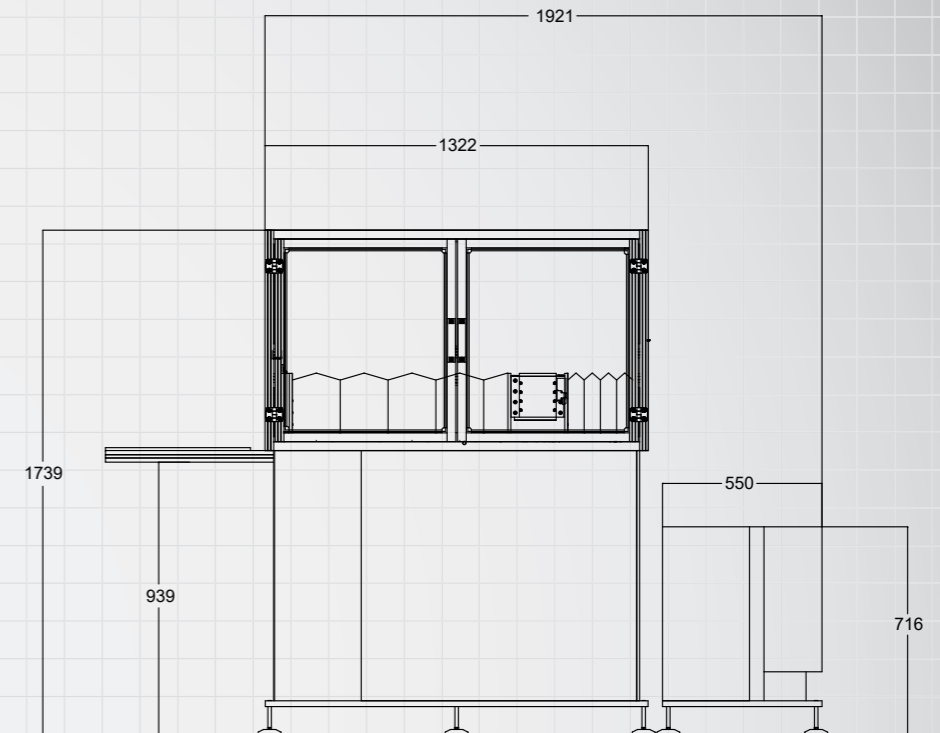
# iCUTwater SMART

## TECHNICAL INFORMATION

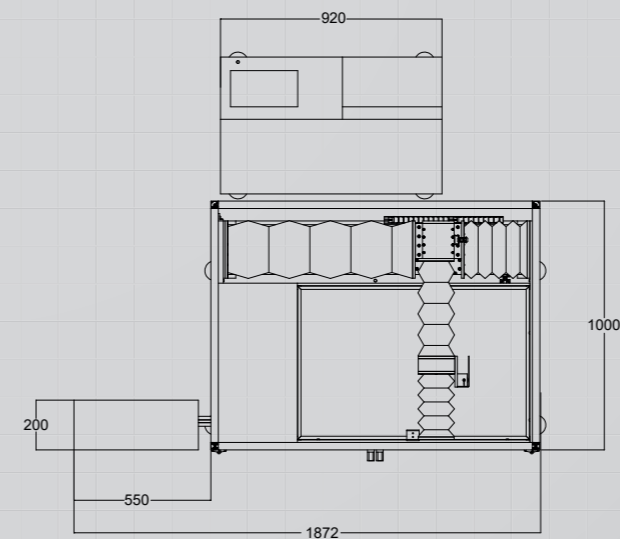
Working area	800 x 500 mm
Positioning accuracy	+/- 0,05 (at 20°C) mm/m
Repetition accuracy	< 0.04 mm/m
Drive system	Ball screws precision class C7
Speed range	0 - 4,000 mm/min
Pump type	High-pressure pump imes-icore® 1.5
Connection voltage	16 A / 400 V
Weight incl. Water	approx. 800 kg

### GOOD REASONS FOR AN IMES-ICORE WATER JET SYSTEM

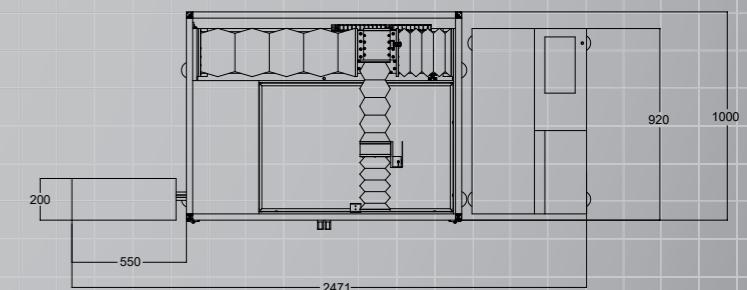
- no thermal loads, precipitation hardening or tensions of the work piece
- minimal dust or smoke processing, no toxic gases
- flexible application within nearly all industrial ranges like mechanical engineering, tool construction, metal processing generally, automobile and aircraft industry, materials research, stone processing and building range, textile and leather industry, electrical and food industries etc.
- almost burr-free cuts, no further treatment necessary
- perforates most materials without starting holes



Installation variant 1



Installation variant 2



imes-icore® GmbH is a leading manufacturer and technology partner in the field of industrial CNC systems since 2003.

**More than 8000 systems have been sold worldwide!**

With special CNC systems for laser, water jet and milling applications, imes-icore® offers the right solution for workshops, educational institutions up to high-tech manufacturing companies

Arrange your personal appointment with imes-icore® now.

imes-icore® Sales and  
Trade partner **Worldwide**



**imes-icore® GmbH**

Im Leibolzgraben 16

36132 Eiterfeld, Germany

Tel: +49 (0) 6672 - 898 228

Fax: +49 (0) 6672 - 898 222

[info@imes-icore.de](mailto:info@imes-icore.de)

**more information at: [www.imes-icore.com](http://www.imes-icore.com)**