



iCUTwater *SMART*

THE IDEAL WORKSHOP SOLUTION

iCUTwater *SMART*

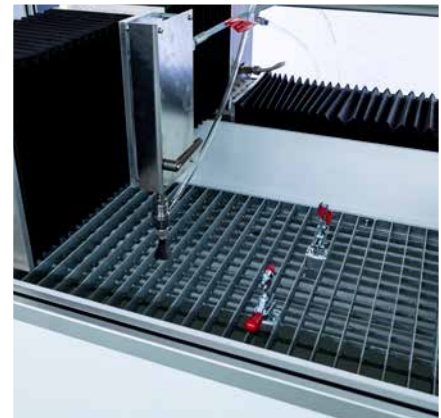


THE IDEAL WORKSHOP SOLUTION

The iCUTwater *SMART* is the first choice for small series, educational institutions and workshops. Our goal was to realize a compact and inexpensive water jet system, which requires as little effort as possible, to set up, maintain and operate. The machine can be connected to a regular 16 A power connection, and works cleanly and quietly through their housing. The pump, developed and manufactured in Germany, can be installed variably next to or behind the machine, which provides additional flexibility. The machine can be installed through a standard 900 mm wide door.

HIGHLIGHTS

- Extremely compact design
- Dimensions (W x D x H) in mm 1550 x 920 x 1450
- Working area 1000 x 500
- Operator protection (complete enclosure)
- Includes a completely integrated 7.5Kw pump (22Kw pump available)
- Environmentally friendly processing
- Integrated sedimentation tank for waste water pre-treatment
- Power supply via standard 16A 3 phase connection
- Low weight (only 800kg incl. water)
- Low noise emission (only < 78 dB in cutting mode)
- Easy to use control software
- Made in Germany



Ask for larger machines with up to 6 meters working range and 6000 bar pressure

iCUTwater *SMART*

VARIETY IN A MINIMUM OF SPACE

Stainless steel	Up to 10 mm
Titanium	Up to 10 mm
Composite materials	Up to 10 mm
Brass	Up to 12 mm
Copper	Up to 15 mm
Plastics	Up to 15 mm
Natural Wood	Up to 15 mm
Acrylic Glass	Up to 15 mm
Aluminium	Up to 20 mm
Glass/bulletproof glass	Up to 20 mm
Marble/Ceramic tiles	Up to 20 mm
Marble	Up to 25 mm
Rubber	Up to 25 mm
Various foams	Up to 40 mm



BLADE BLANK

duration 01:54 min (Stainless Steel, 2 mm)



ADAPTER

duration 02:36 min (Plastic, 6 mm)

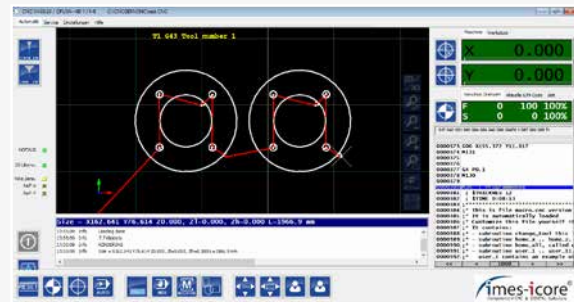


COMPONENT PART

duration 03:39 min (Aluminium, 8 mm)

CONTROLLING SOFTWARE

- Operation via supplied laptop with Windows 10
- User-friendly cutting software
- DXF and BMP conversion possible
- Large and dynamic material database
- Control software included (no running license costs)





iCUTwater *SMART*

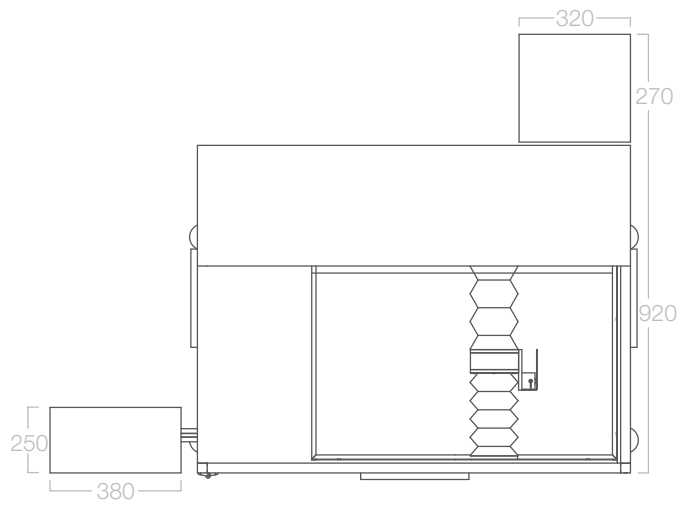
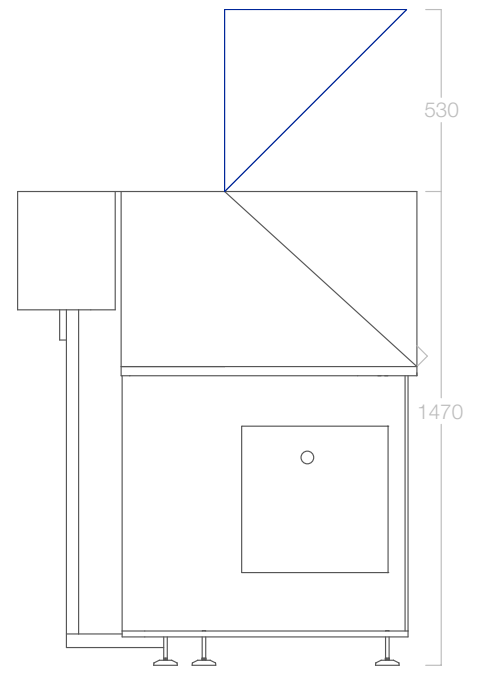
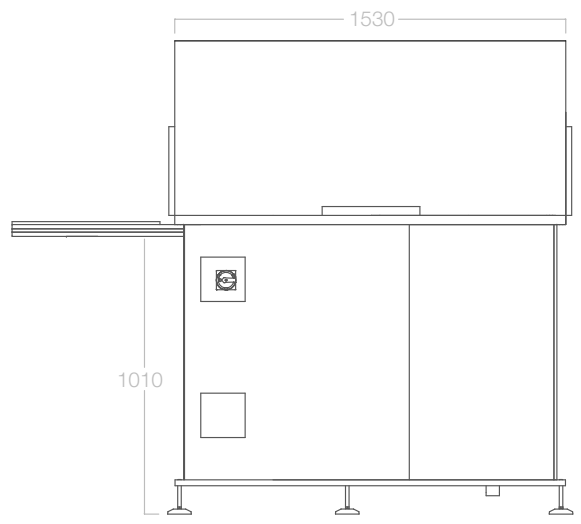
TECHNICAL INFORMATION

Working area	1000 x 500 mm
Positioning accuracy	+/- 0,08 mm/m (20°C)
Repetition accuracy	< 0.04 mm/m
Drive system	Ball screws precision class C7
Speed range	0 - 4,000 mm/min
Pump type	High-pressure pump imes-icore® 1.5
Connection voltage	16 A / 400 V
Weight incl. Water	approx. 800 kg

5 GOOD REASONS for an imes-icore water jet system

- No thermal loads, hardening or stresses of the work piece
- Minimal dust or smoke processing, no toxic gases
- Cuts most materials without starting holes
- Burr free cutting, no further treatments necessary
- Flexible applications within all industrial sectors including mechanical engineering, tool construction, metal processing, automotive, aerospace, materials research, stone processing, electrical, textile and leather

DIMENSIONS



imes-icore® GmbH is a leading manufacturer and technology partner in the field of industrial CNC systems since 2003.

More than 8000 systems have been sold worldwide!

With special CNC systems for laser, water jet and milling applications, imes-icore® offers the right solution for workshops, educational institutions up to high-tech manufacturing companies



Emco Education Ltd, Emco Industrial Ltd, Units 4, 6, 7, Hayling Billy Business Centre, Furniss Way,
Hayling Island, Hampshire, United Kingdom PO11 0ED sales@emco.co.uk

